

HB Rubber Roof Kits



**Prelasti EPDM system
with a BBA certified
40 year life expectancy.**



Haire Bros Ltd

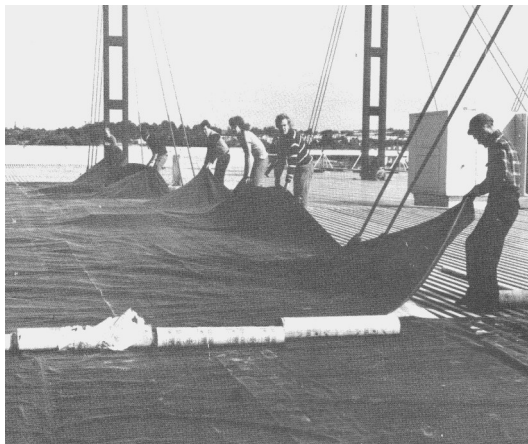
Established in 1956 Haire Brothers Ltd are a Northern Ireland based company who have many years experience in the installation of rubber roofing systems.

We have developed a self-install flat roof kit which incorporates a commercial grade EPDM rubber sheet manufactured by Prelasti.

Prelasti EPDM is guaranteed for twenty five years and has a BBA certified life expectancy in excess of 40 years subject to periodic maintenance.

The kit is easy to install and gives a professional finish to domestic and commercial flat roofs.

No naked flames or special tools are required to install the kit.



HB Rubber Roof Kits

- **GUARANTEED 25 YEARS**
- **BBA CERTIFIED LIFE EXPECTANCY IN EXCESS OF 40 YEARS**
- **COMMERCIAL GRADE 1.2MM OR 1.5MM PRELASTI EPDM**
- **UNRESTRICTED FIRE RATING ON TIMBER DECK**
- **CAN BE OVERALL BONDED TO EXISTING FELT ROOF**
- **NO SPECIAL TOOLS REQUIRED**
- **NO FLAME INSTALLATION**
- **LOCAL SUPPLIER**



Agrément Certificate
92/2799

What's in the Kit

HB Rubber Roof Kits are assembled in our workshop in Coleraine for collection or delivery.

EPDM sheets are tailor-made to fit individual roof sizes and shapes. This minimises waste and keeps costs down.

Kits can be ordered online at

www.hairebros.co.uk

or

FREEPHONE 0800 085 4645

Kits are also available from your local builder's supplier.



The standard kit comprises:

1. Commercial grade Prelasti 1.2mm fire-retardant EPDM rubber sheet
2. Black Plastisol angle trims for open sides
3. Black Plastisol flat trims for gutter sides
4. Fixings and caps for trims
5. Contact or water-based adhesive for bonding to deck
6. Contact adhesive for bonding to upstands
7. Two corner patches

EPDM sheets are tailor-made in our factory using a hot-platen welder at 240°C and 6 Bar pressure.

The vulcanised welds form the strongest part of the sheet.

We can pre-fabricate EPDM sheeting in one panel up to 2,000 m².

Pre-fabrication minimises waste, eliminates site joints and speeds up installation.



Installation Instructions

STEP 1. PREPARE THE SUBSTRATE

Ensure the substrate is smooth, clean and dry before starting work.

When re-covering an existing felt roof where the deck is sound, the EPDM can be overall bonded to the felt.

STEP 2. ROLL OUT THE EPDM SHEET

Spread out the EPDM sheet and let it relax for 30 minutes. It should not be laid under tension.

STEP 3. BOND TO DECK

Fold back the EPDM to expose half the roof. Using a emulsion roller apply contact adhesive to both the back of the EPDM and the deck in a 1m wide band.

Wait until both surfaces are touch dry and lay the EPDM gently into the adhesive. Smooth out any wrinkles as you go. Continue in this way until the EPDM is fully bonded.

As an alternative water-based adhesive can be used to bond to timber decking. The adhesive is applied to the deck only with a serrated spreader and the EPDM can be laid down straightaway without waiting for the adhesive to dry.

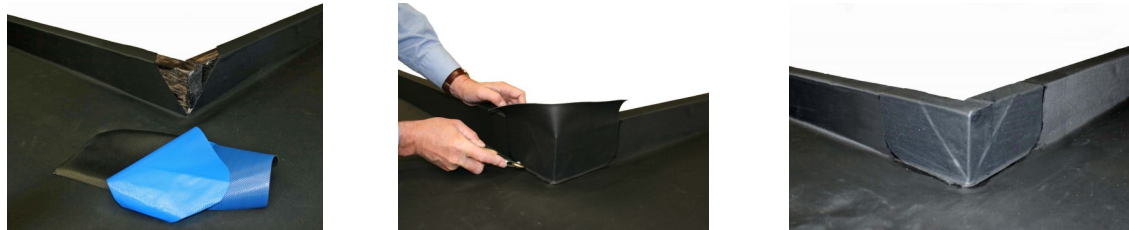
STEP 4. BOND TO UPSTANDS

The EPDM should be fully bonded with contact adhesive to all upstands. Using a paintbrush apply a thin coating to both surfaces and when touch dry carefully place the EPDM in position.



STEP 5. EXTERNAL CORNERS

External corners are dressed using butyl tape and contact adhesive. Trim the tape to size and peel off the blue backing paper. Coat both surfaces with contact adhesive, wait until the adhesive becomes touch dry and carefully place the tape in position. Roll the edges firmly with a hand roller.



STEP 6. INTERNAL CORNERS

The EPDM is folded into internal corners and bonded with contact adhesive.



STEP 7. PIPES AND OUTLETS

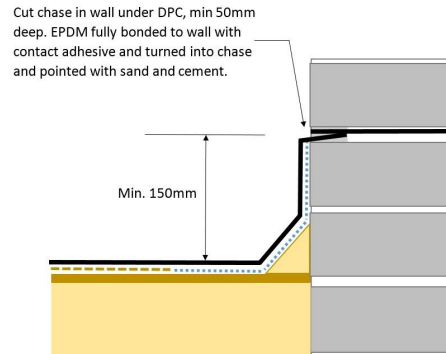
Pre-fabricated butyl sleeves are used to dress rainwater outlets and flue pipes. The sleeves are bonded in position using contact adhesive.



STEP 8. WALL ABUTMENTS

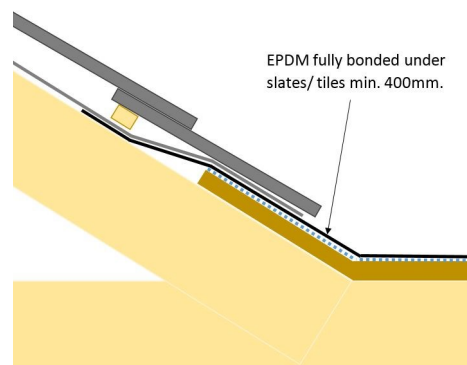
At wall abutments cut a chase min. 50mm deep below the DPC. Fully bond the EPDM to the wall with contact adhesive, turn into the chase and point with sand and cement.

Where there is an existing lead flashing in good condition this can be pulled up gently, the EPDM fully bonded to wall underneath and the lead pushed back into position.



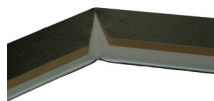
STEP 9. PITCHED ROOF ABUTMENTS

At pitched roof abutments the first two rows of slates or tiles should be removed, the EPDM sheet fully bonded a min. 400mm underneath the slater's felt and the slates or tiles replaced.

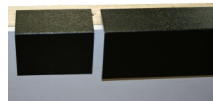


STEP 10. ANGLE TRIMS

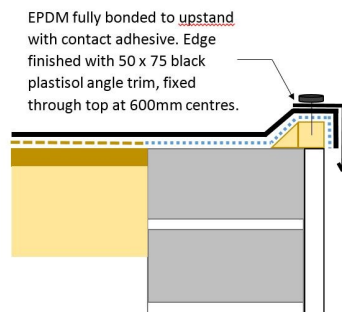
Exposed edges other than gutter edges are finished with black plastisol angle trims.



Cut trim as shown to fold around corners

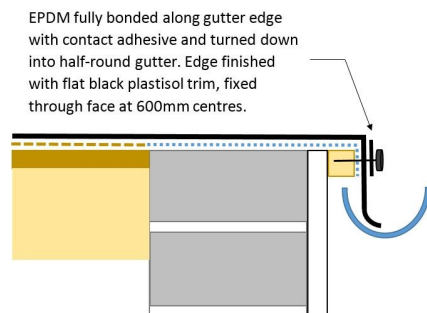


Trims are butted together with jointers in behind



STEP 11. GUTTER TRIMS

Gutter edges are finished with black plastisol flat trims.



Price Enquiry Form

Type of flat roof (garage, house etc.) _____

Location _____

We pre-fabricate the EPDM sheet to your dimensions. Measure your roof and add 150mm extra to overhang each side, 200mm to go up walls and 400mm to go under tiles or slates .

Length (m) _____ x Width (m) _____

Draw a sketch of the roof showing adjoining walls, pitched roofs, open sides or gutter sides. Mark on the sketch chimneys, flues, rainwater outlets, rooflights etc.



Length of gutter trim sides _____M
(round up to nearest metre)

Length of angle trim sides _____M
(round up to nearest metre)

Is a sleeve required for a flue pipe or rainwater outlet? Yes / No

If yes, to fit what diameter? _____MM

Name _____

Tel _____
No _____ Email _____

Please return to:

Email: sales@hairebros.co.uk
Tel: 028 7034 2696
Fax: 028 7034 2387



We will be pleased to send you a price without obligation.

Please see below examples of HB rubber roof kits. As an alternative to overall bonding the EPDM sheet can be ballasted with gravel or concrete pavers.



For technical or sales enquiries
Email: sales@hairebros.co.uk
FREEPHONE 0800 085 4645.


HaireBros
Roofing & Lining Systems

48 Cloyfin Road
Coleraine
BT52 2NY

Tel: 028 7034 2696

Fax: 028 7034 2387

Email: office@hairebros.co.uk